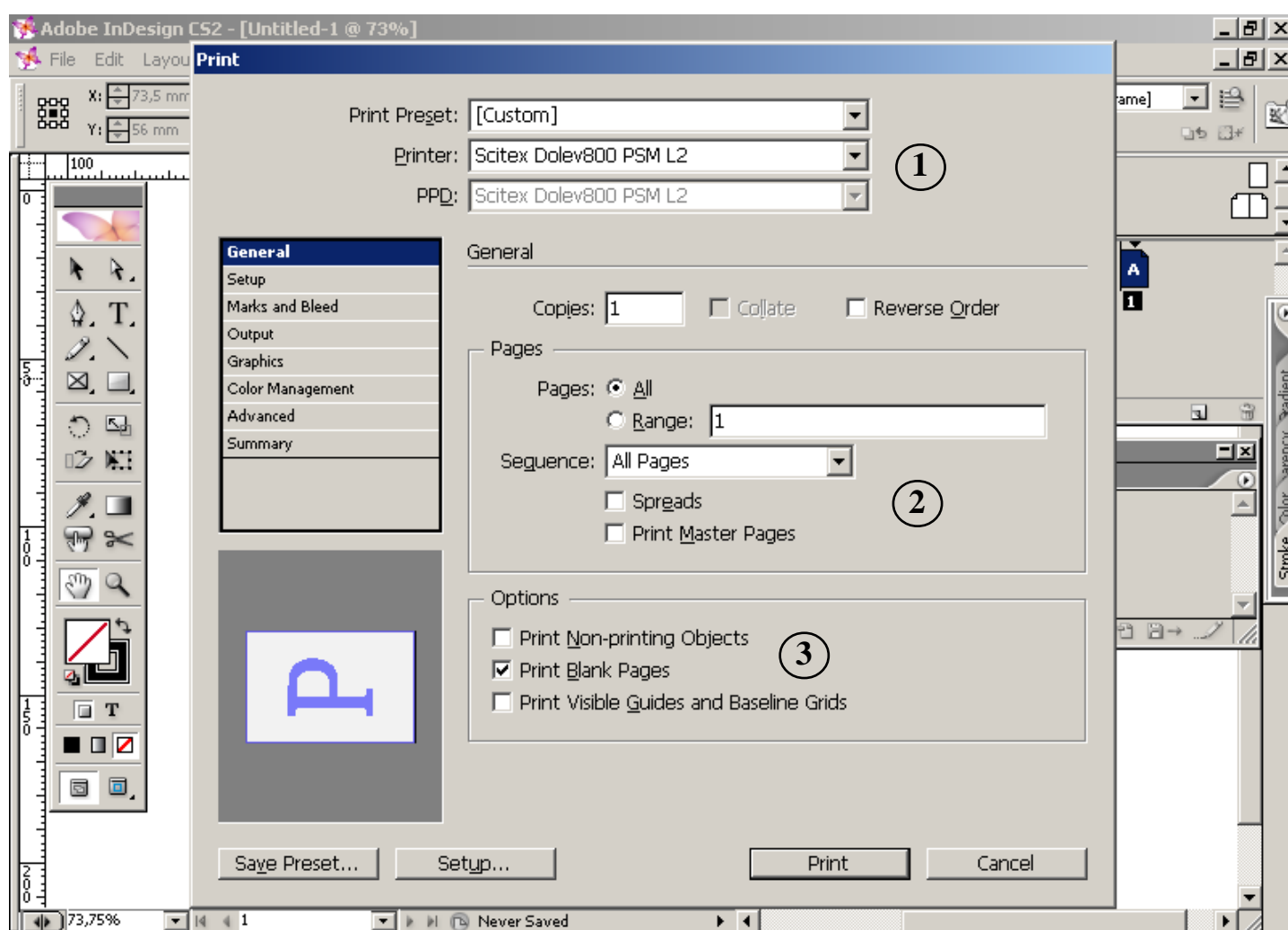


# Como Fechar Arquivos Pelo InDesing

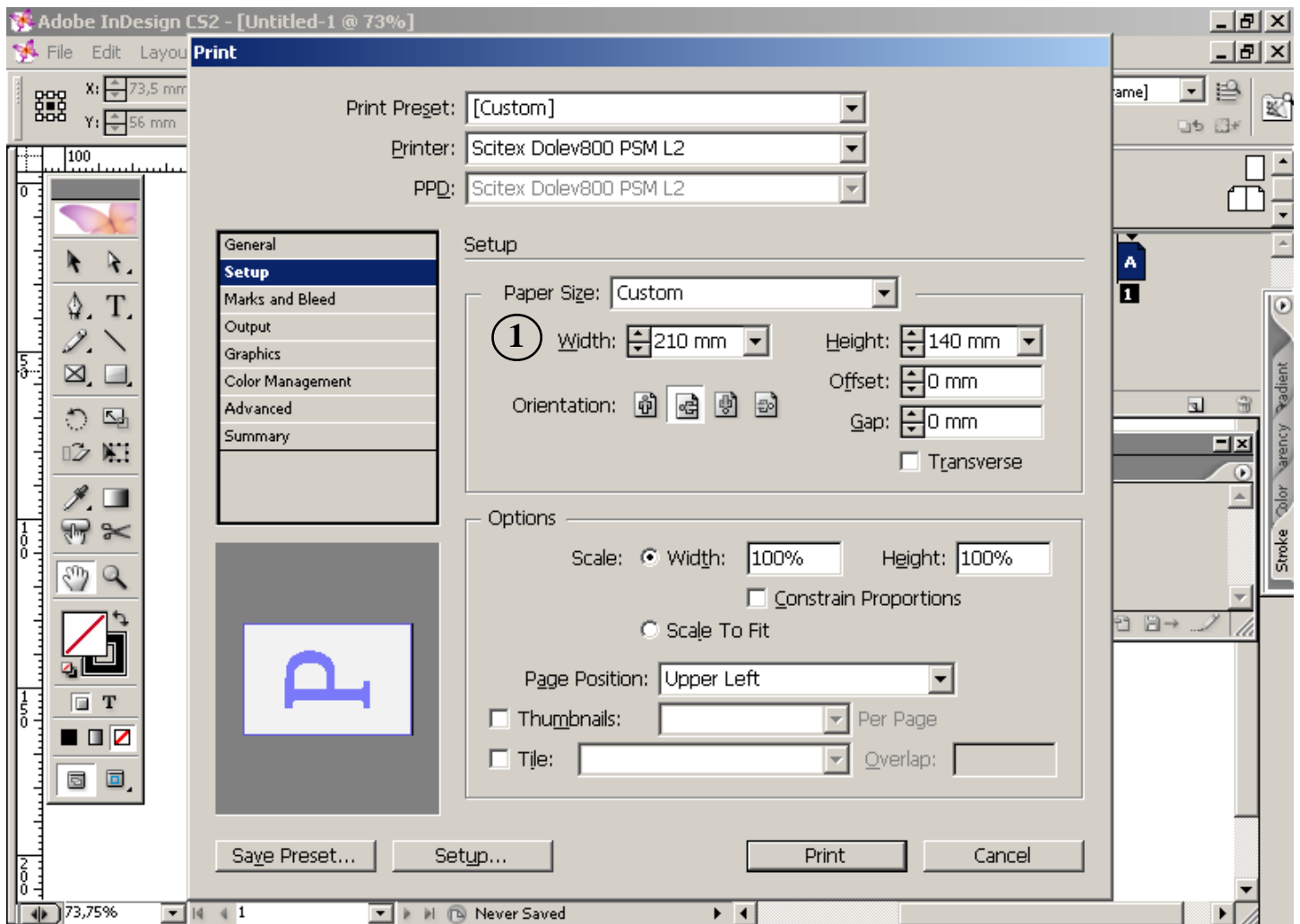
## PASSO-A-PASSO

1



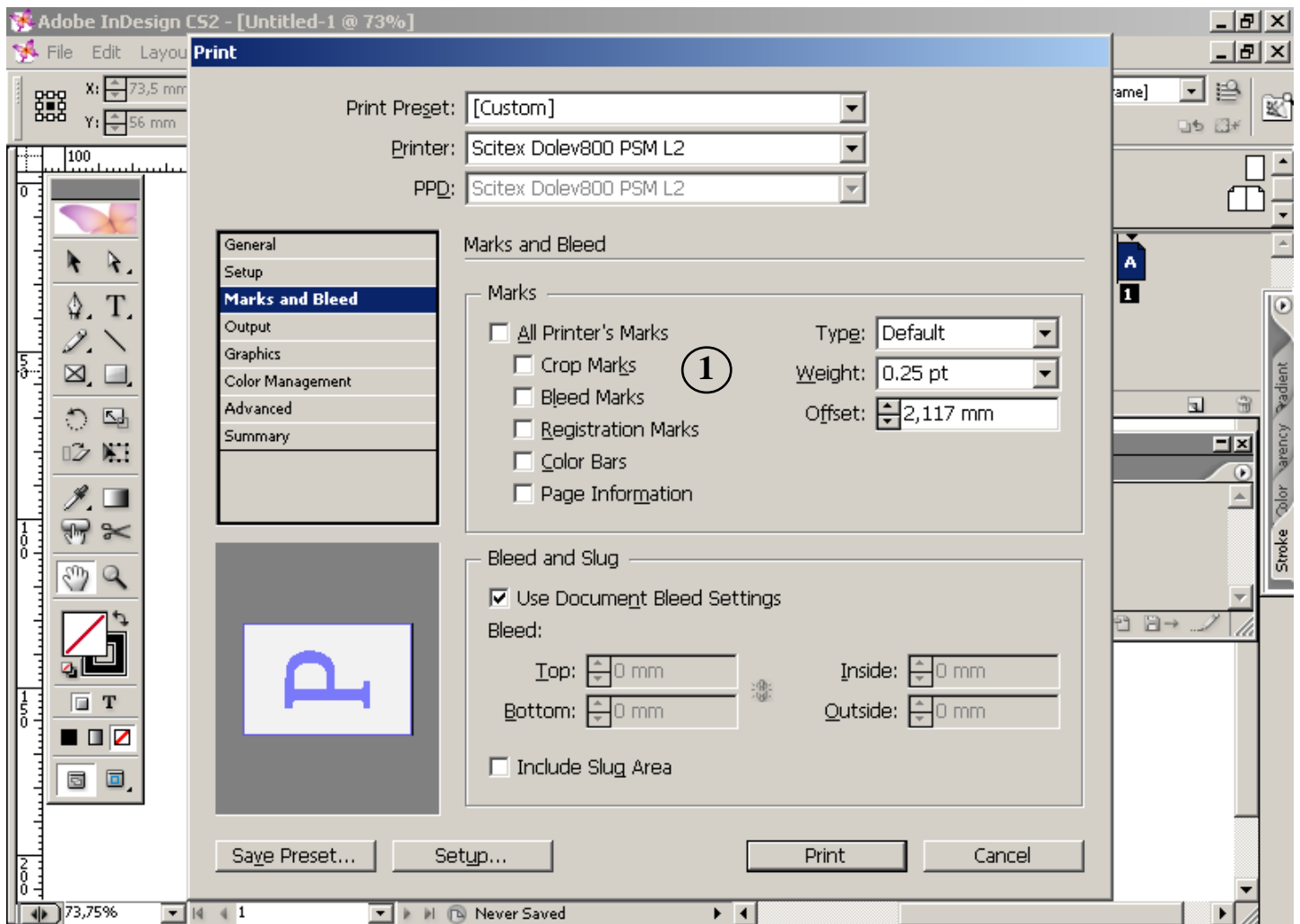
- 1 - Selecione a Impressora pos-cript a ser usada.
- 2 - Defina as paginas a serem impressas.
- 3 - Selecione a opção "Print Blank Pages" (Imprimir Paginas em Branco).

2

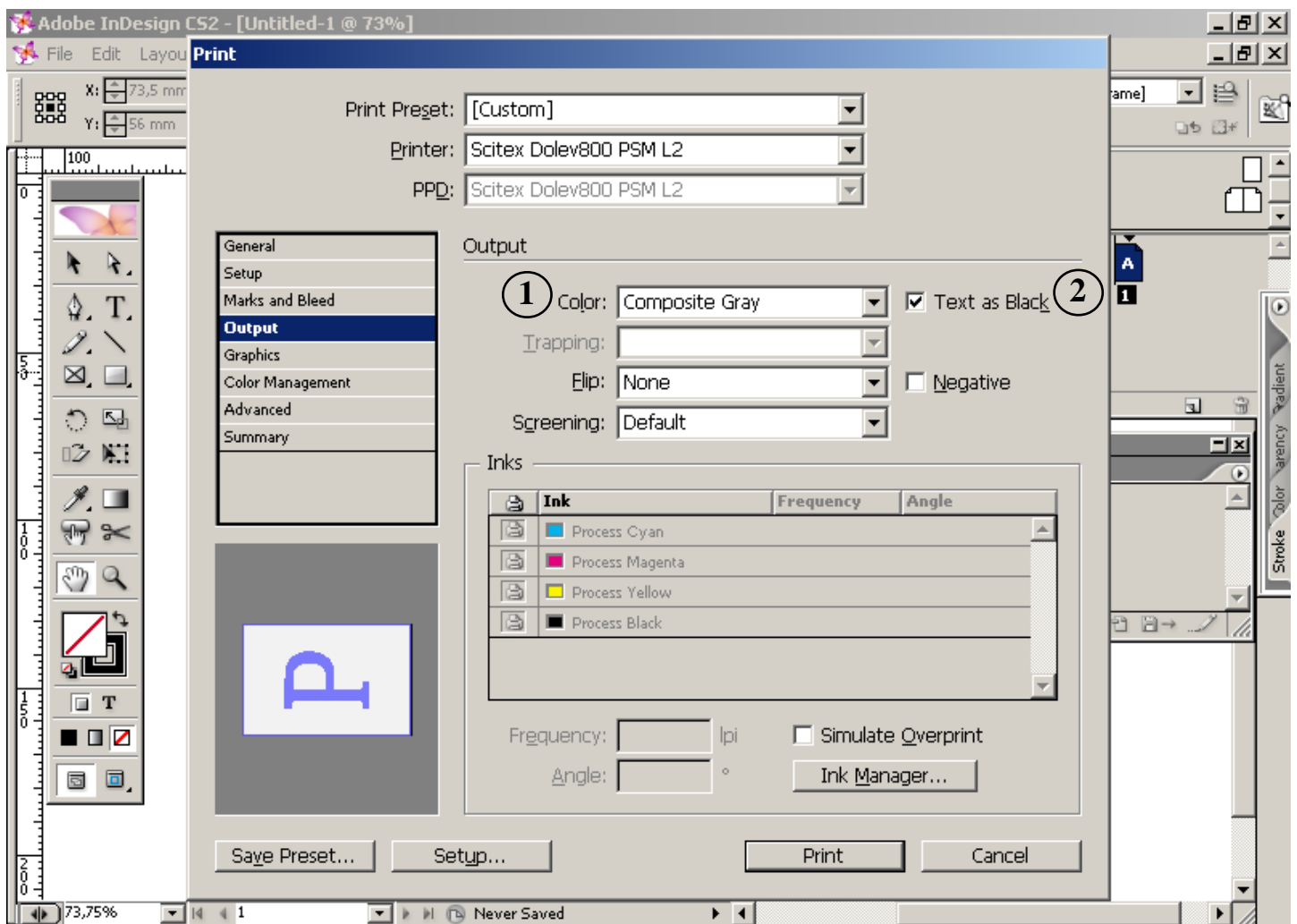


1 - Defina o tamanho do papel.

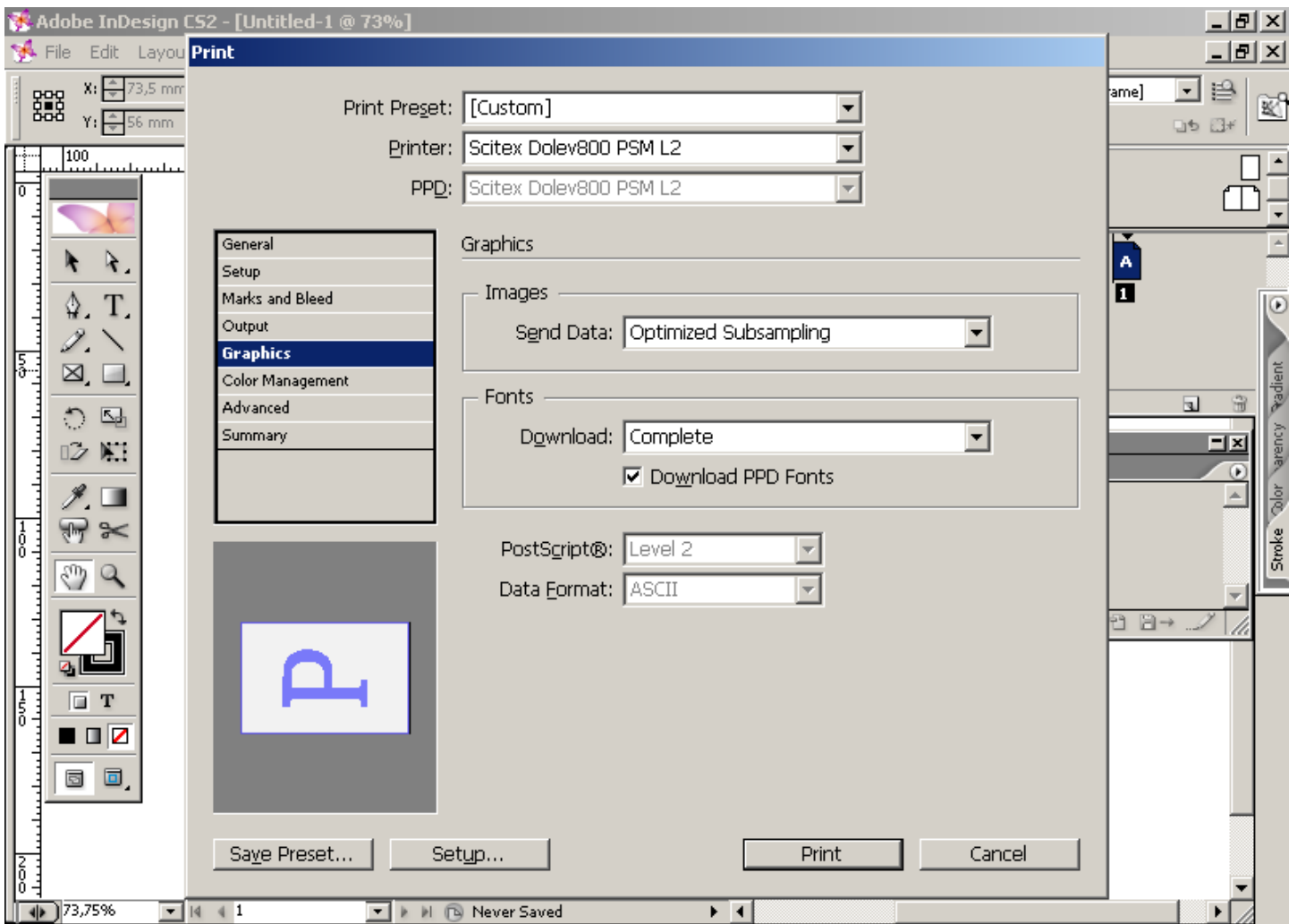
### 3



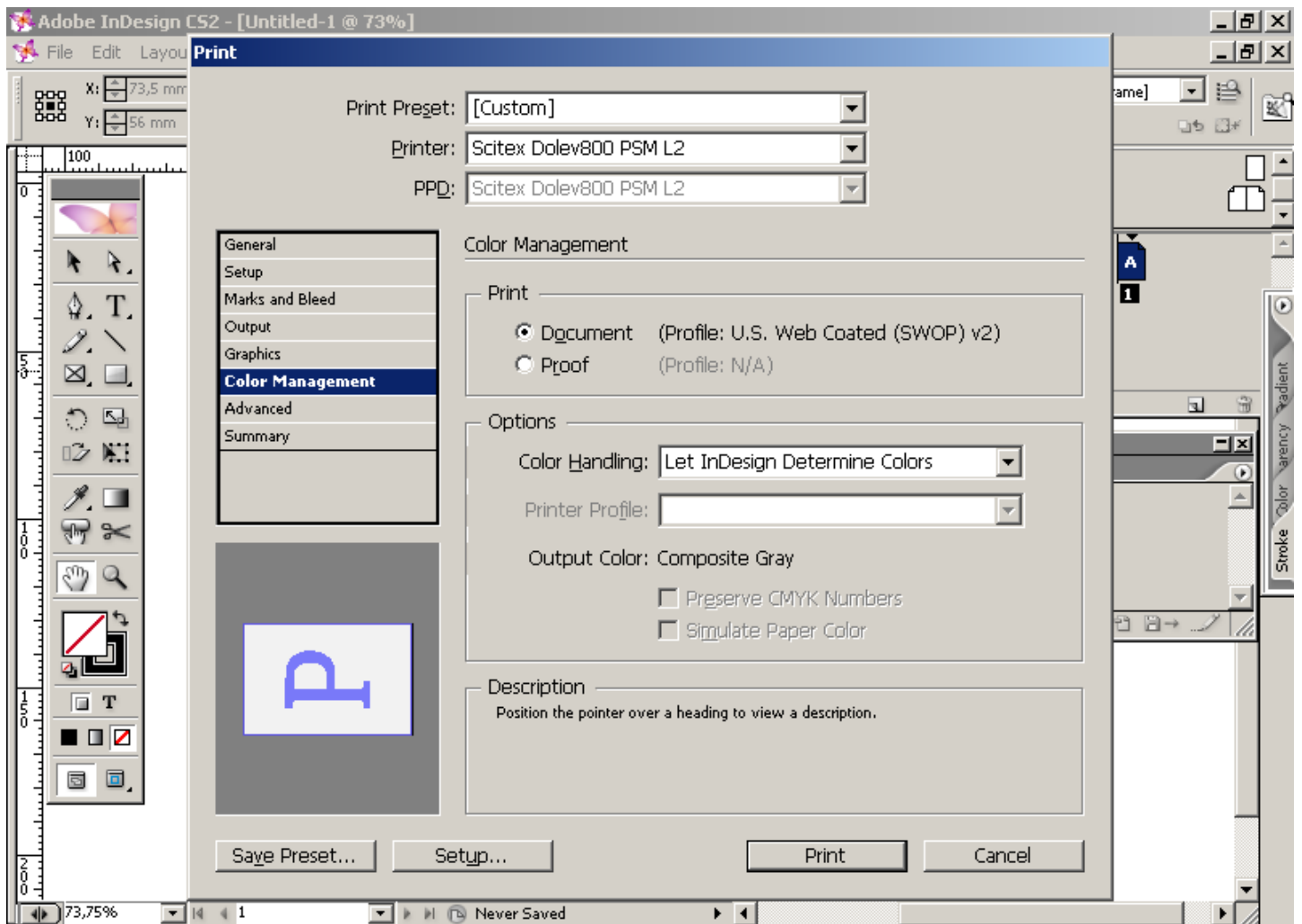
1 - Defina as marcas de corte a serem inseridas no arquivo.

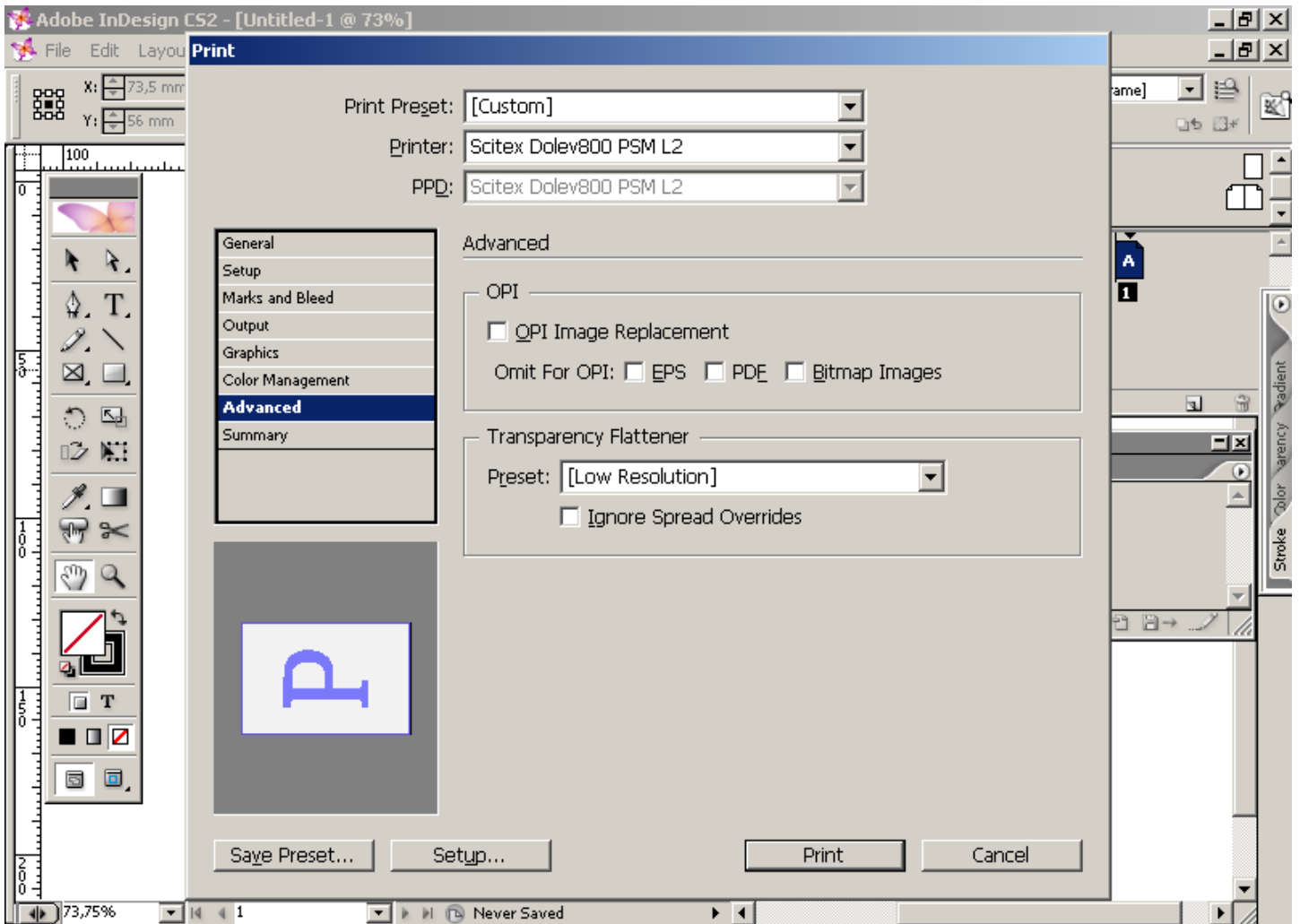


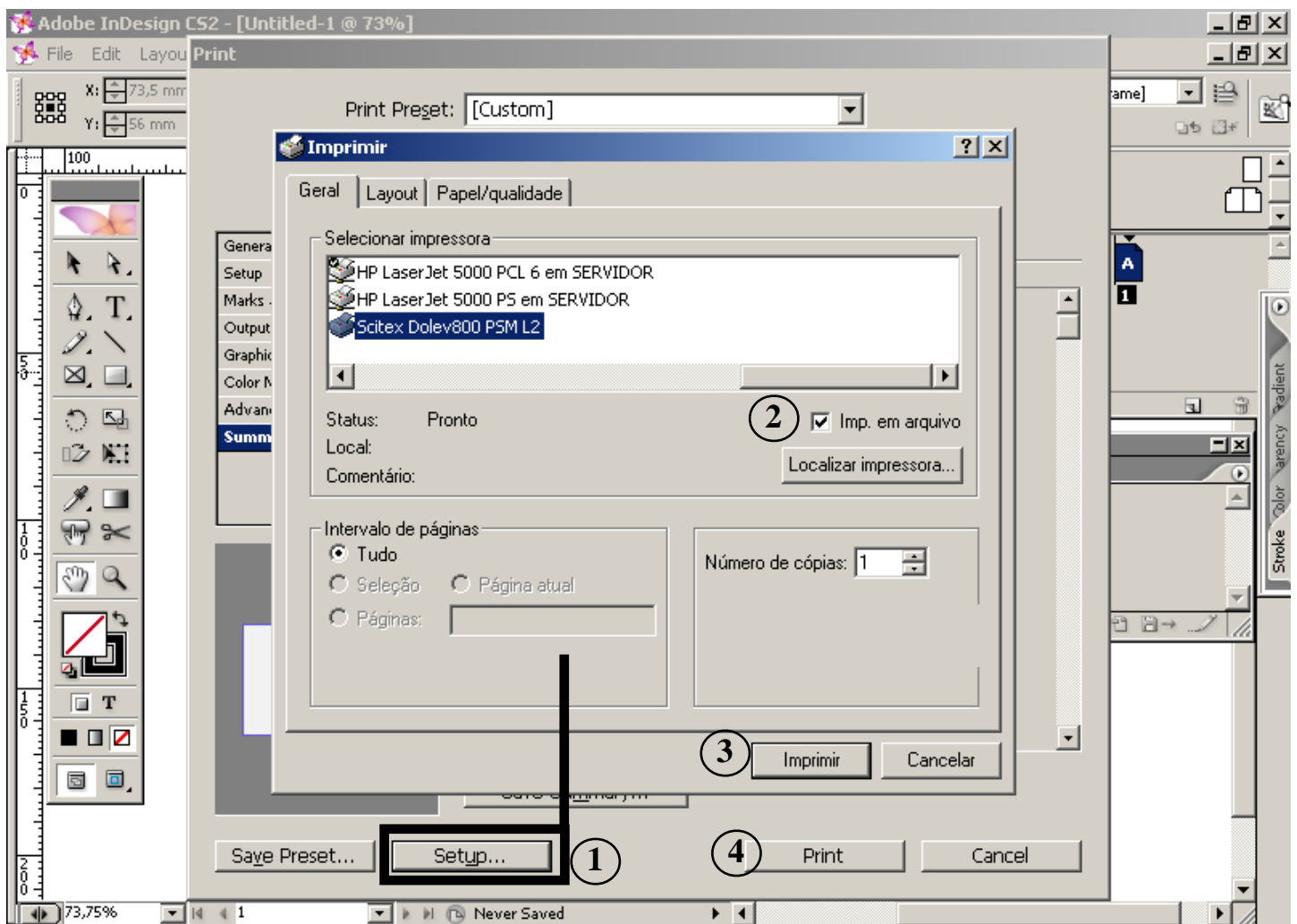
- 1 - Ajuste a opção "Color" para "Composite Gray".
- 2 - Ative a opção "Text as Black".



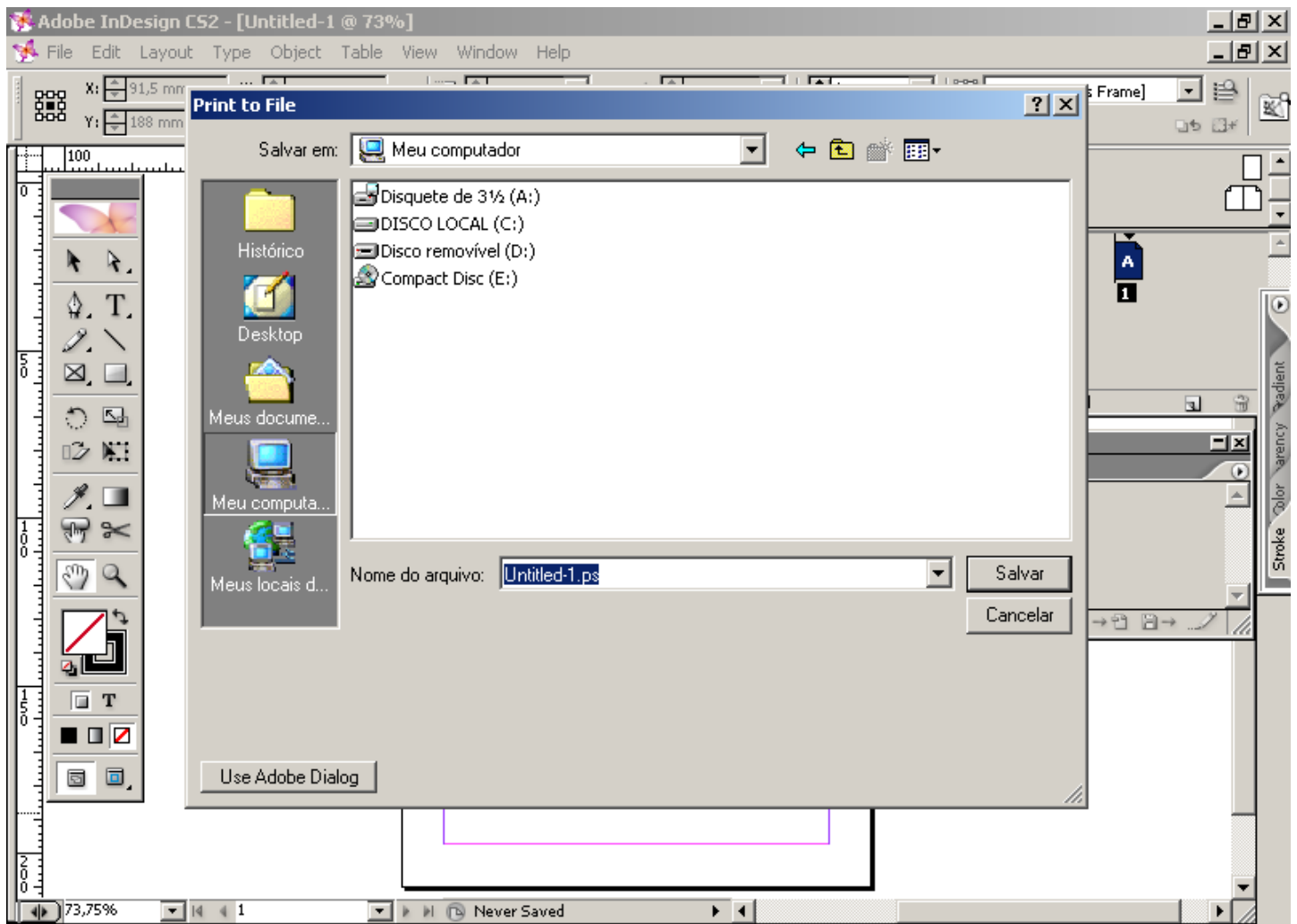
# 6



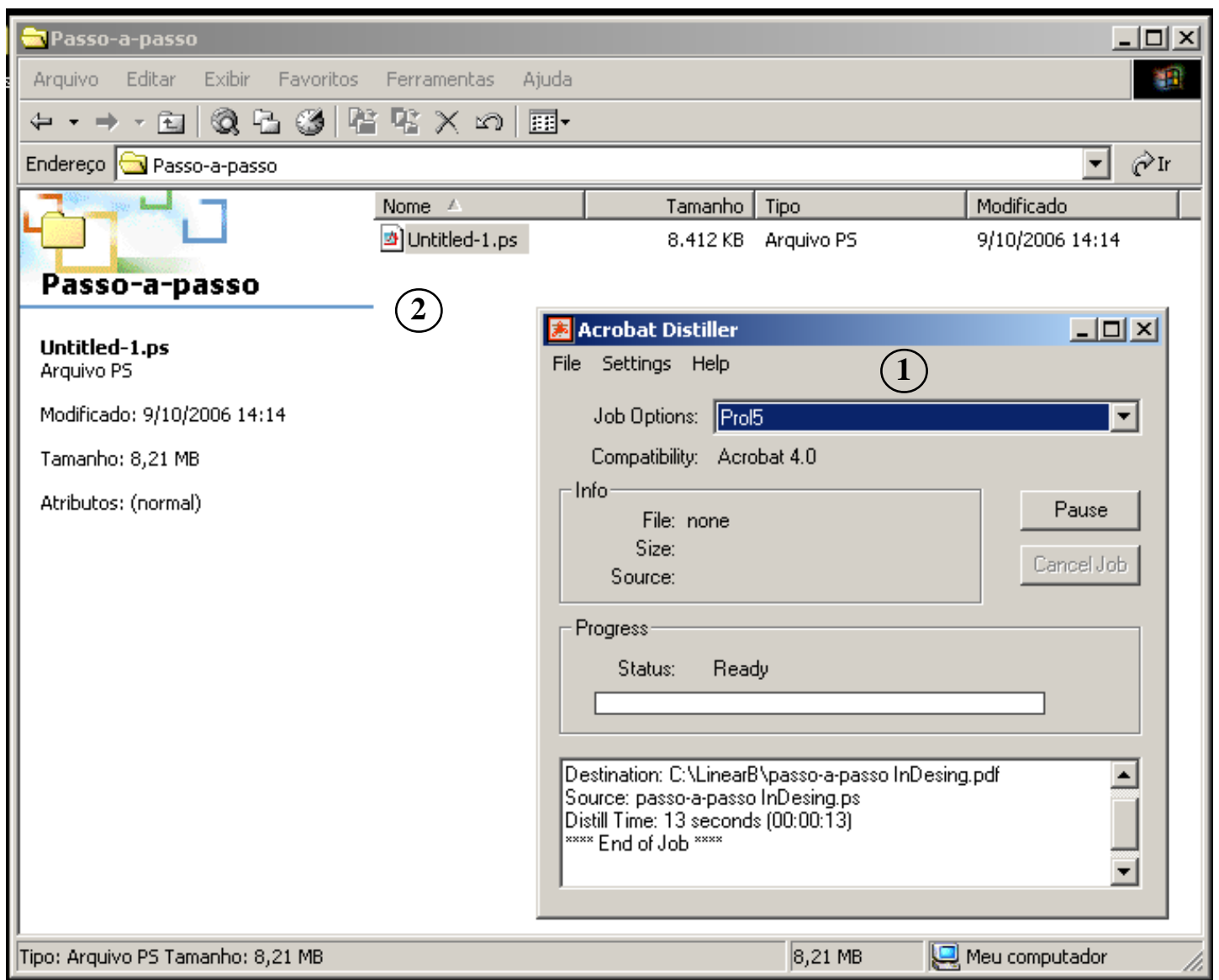




- 1 - Clique em "SETUP", abra uma nova janela.
- 2 - Ative a opção "Imp. em arquivo".
- 3 - Clique em "Imprimir".
- 4 - Clique em "Print".



Salve o arquivo na pasta escolhida.



1 - No "Acrobar Distiller", seleccione o Job Option "Prol5".

2 - Seleccione o arquivo "PS" e arraste-o para dentro do "Acrobar Distiller" para gerar o PDF.